

University of Massachusetts Boston

ScholarWorks at UMass Boston

Gastón Institute Publications

Gastón Institute for Latino Community
Development and Public Policy Publications

9-2006

Trends in Enrollment and Outcomes for Latino Children in Massachusetts Public Schools

Miren Uriarte

University of Massachusetts Boston, miren.uriarte@umb.edu

Nicole Lavan

University of Massachusetts Boston

Follow this and additional works at: https://scholarworks.umb.edu/gaston_pubs



Part of the [Bilingual, Multilingual, and Multicultural Education Commons](#), and the [Elementary and Middle and Secondary Education Administration Commons](#)

Recommended Citation

Uriarte, Miren and Lavan, Nicole, "Trends in Enrollment and Outcomes for Latino Children in Massachusetts Public Schools" (2006). *Gastón Institute Publications*. 144.
https://scholarworks.umb.edu/gaston_pubs/144

This Fact Sheet is brought to you for free and open access by the Gastón Institute for Latino Community Development and Public Policy Publications at ScholarWorks at UMass Boston. It has been accepted for inclusion in Gastón Institute Publications by an authorized administrator of ScholarWorks at UMass Boston. For more information, please contact scholarworks@umb.edu.



The Mauricio Gastón Institute
for Latino Community Development
and Public Policy

Trends in Enrollment and Outcomes for Latino Children in Massachusetts Public Schools

Miren Uriarte and Nicole Lavan

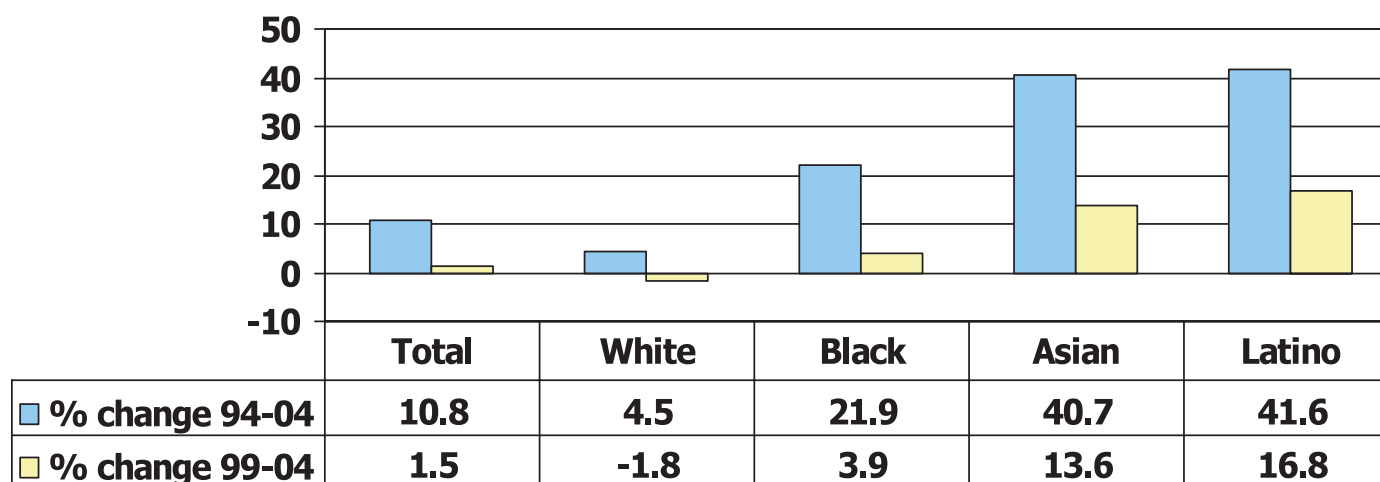
Gaston Institute, UMass Boston — September 2006



The Mauricio Gastón Institute, University of Massachusetts Boston, 100 Morrissey Boulevard, Boston, MA 02125 | T. 617.287.5790

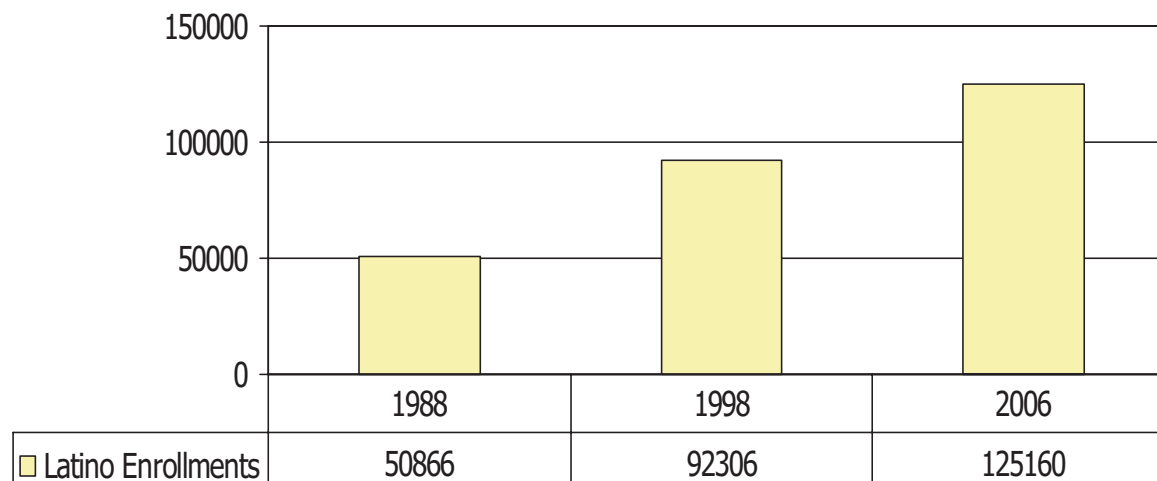
Enrollment Trends

Change in Public School Enrollments By Race. MA, 1994-2004 and 1999-2004



In the last decade, the entry of Black, Latino and Asian students has driven the growth of public school enrollments in MA.

Latino Public School Enrollments, MA 1988-2006



Mass School Districts with high Latino Enrollments. 1988, 1998 and 2006

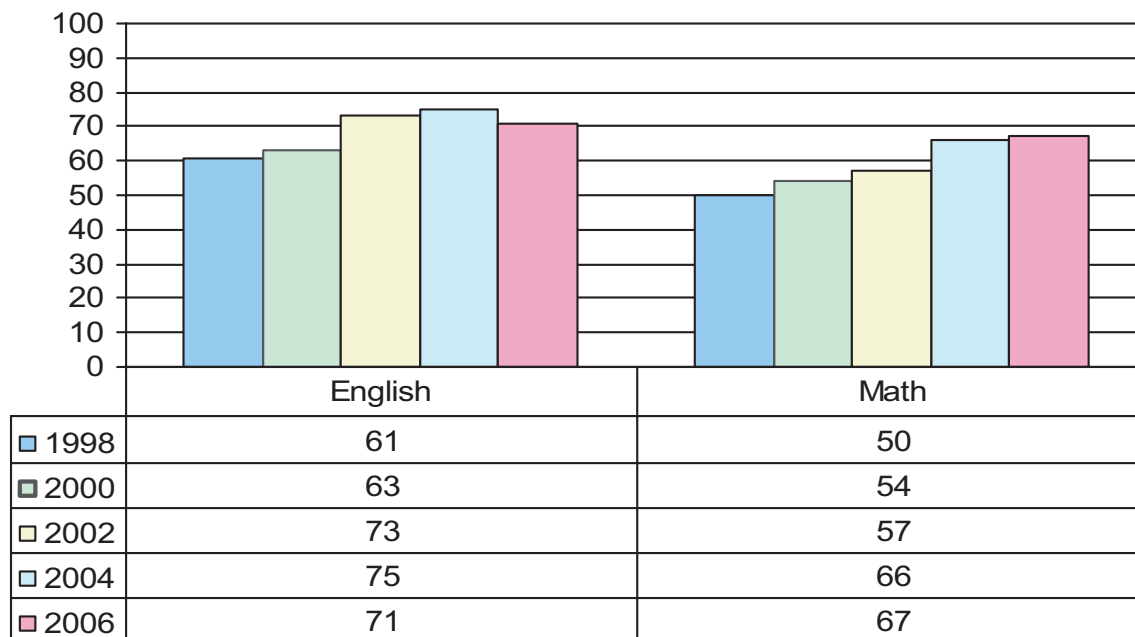
1988		1998		2006	
District	%	District	%	District	%
Lawrence	64.1	Lawrence	78.4	Lawrence	86.3
Holyoke	55.4	Holyoke	68.7	Chelsea	76.5
Chelsea	50.3	Chelsea	65.2	Holyoke	73.9
Springfield	30.6	Springfield	40.1	Springfield	50.8
Methuen	27.2	Southbridge	31.8	Lynn	39.9
Boston	19.0	Worcester	26.9	Southbridge	39.5
Worcester	18.7	Boston	25.7	Fitchburg	36.5
Fitchburg	18.4	Fitchburg	24.9	Boston	33.4
Southbridge	18.3	Salem	24.7	Worcester	33.0
Chicopee	15.9	Lynn	24.3	Salem	31.0
Percent of Statewide Latino Enrollments		Percent of Statewide Latino Enrollments		Percent of Statewide Latino Enrollments	
84.7%		76%		55.8%	

Trend towards increased enrollments in traditional districts (see above) and also dispersion towards new districts. Enrollments accounted for by densest districts drop from 85% to 56% of statewide Latino enrollments between 1988 and 2006.

Outcome Trends

Latino Grade 4 MCAS Results. MA, 1998-2004

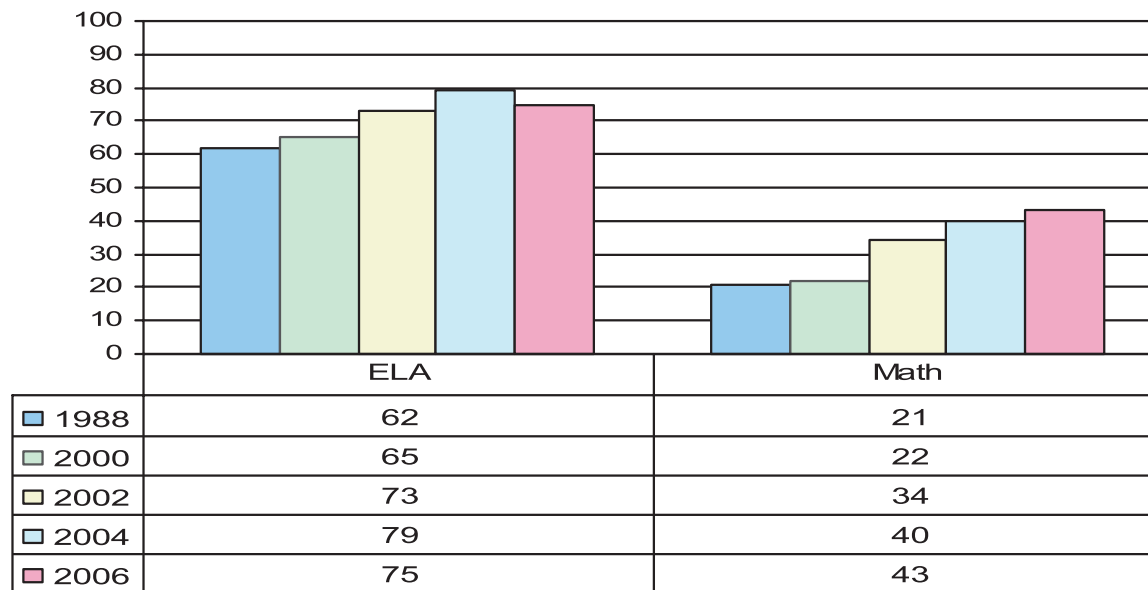
(Percent Passing - "Needs Improvement" and Above)



Grade 4 ELA and Math passing rates improved steadily until 2006 when ELA passing rates declined. In this year, only 67% of the Latino test takers in 4th grade pass the Math MCAS test.

Latino Grade 7 and 8 MCAS Results. MA, 1998-2004

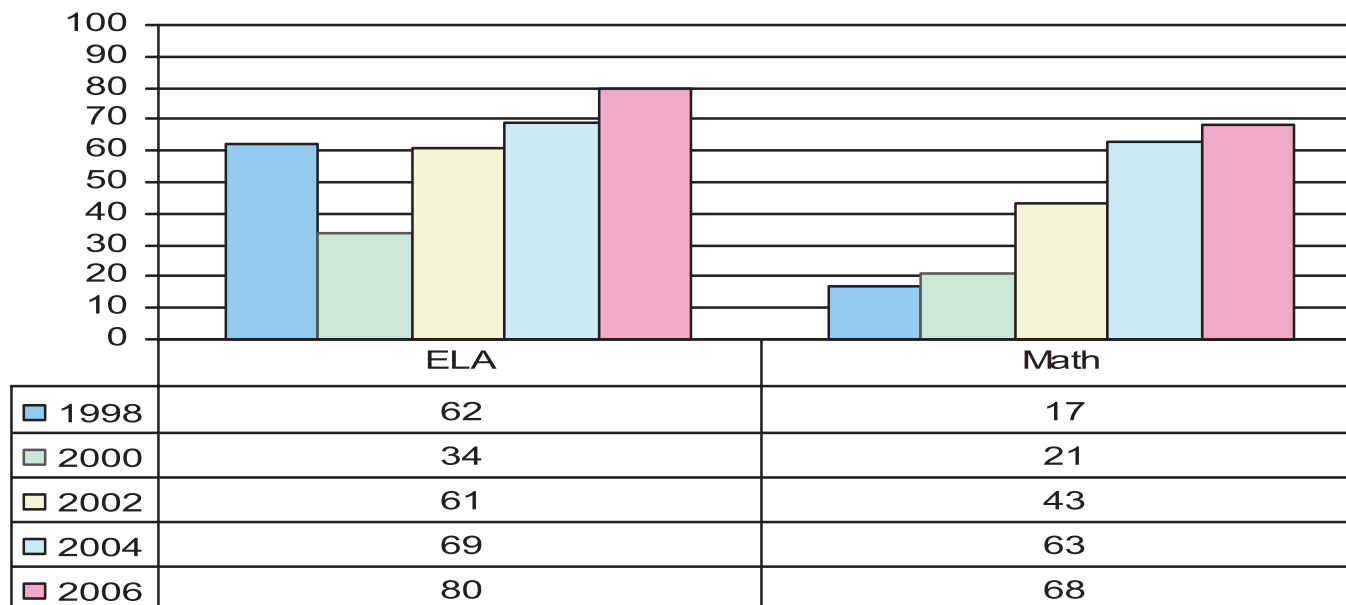
(Percent Passing - "Needs Improvement" and Above)



Grade 7 and 8 ELA and Math passing rates have improved steadily, but the results in Math are still very low. ELA passing rates decreased slightly in 2006

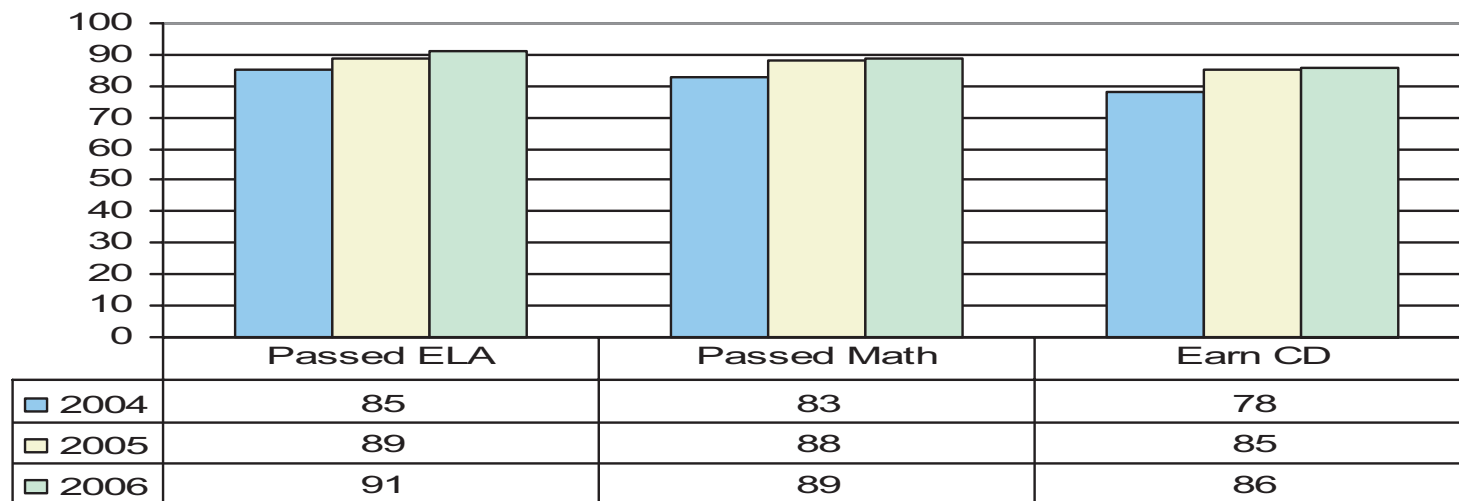
Latino Grade 10 MCAS Results. MA, 1998-2004

(Percent Passing - "Needs Improvement" and Above)



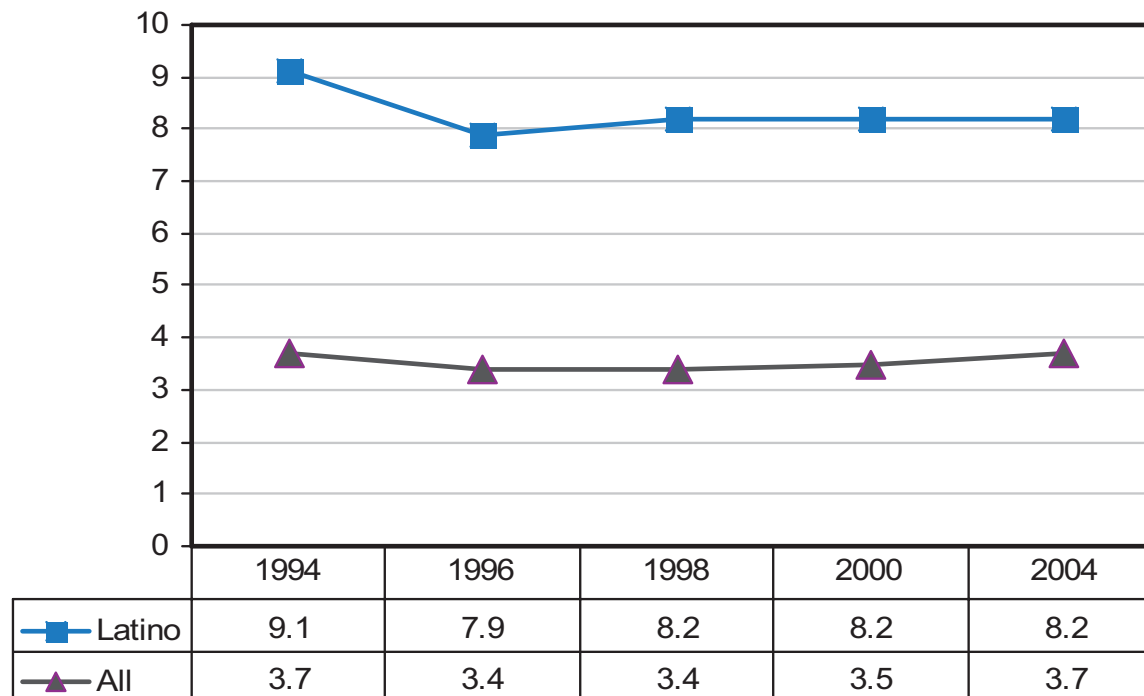
Grade 10 test results have improved in both Math and ELA. In 2006, 80% of Latino test-takers passed ELA and 63% passed Math on the first try.

Latino Students Earning Competency Determination. MA, Classes of 2004, 2005, 2006 (%)



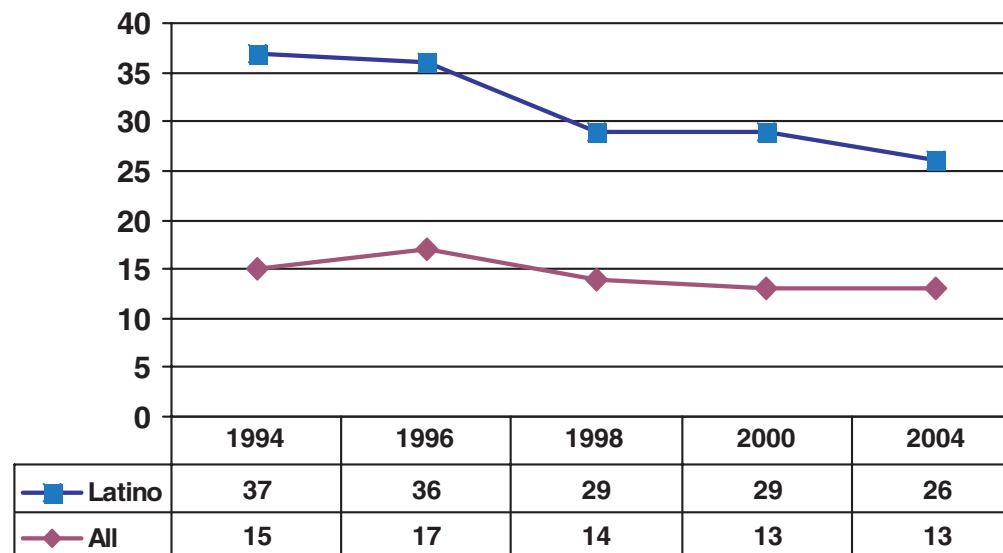
Competency determination (CD) allows a student to graduate from a MA public high school. Students may take the 10th grade Math and ELA exams several times until they pass and earn CD. The determination rate for Latino students has increased slowly in the last three years.

Annual Public High School Drop Out Rates for Latino and All Students. MA, 1994-2004



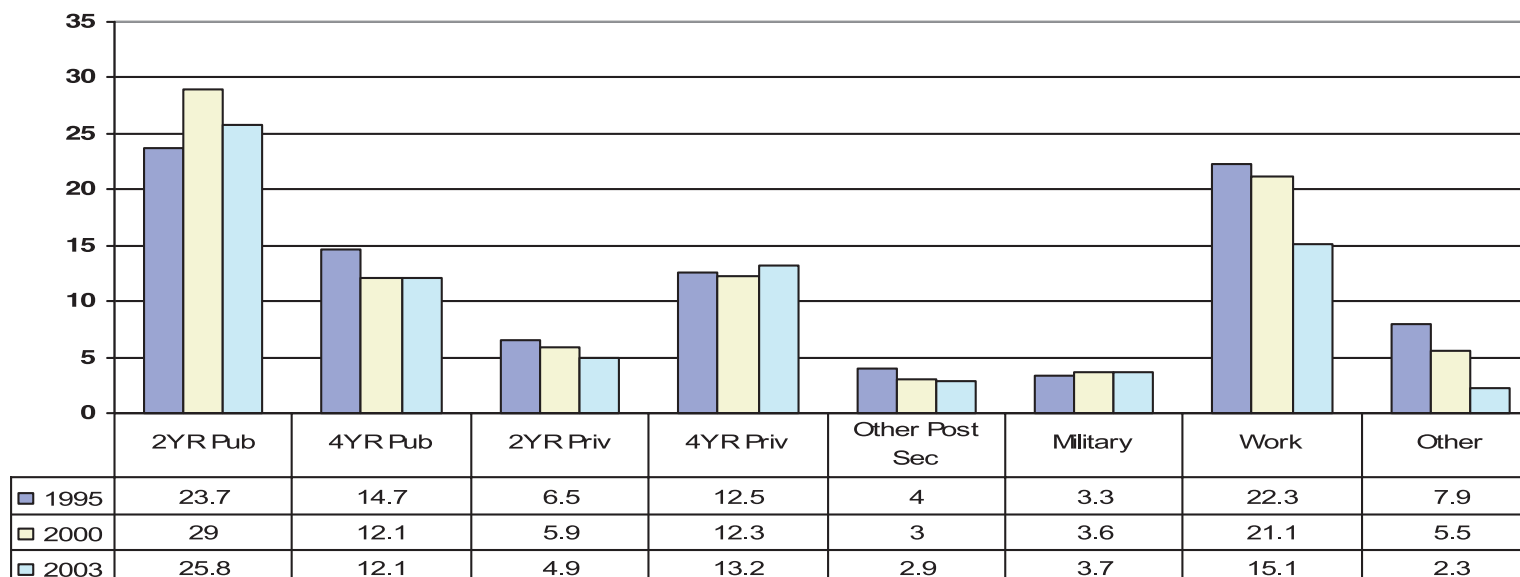
Annual drop out rates for Latino students have shown some improvement but this improvement has stalled in the last 6 years.

Projected Public High School 4-year drop out rate for Latino students. MA, 1994-2004



The percent of Latino 9th graders who drop out before graduating from 12th grade has been decreasing. Nevertheless one out of every 4 Latino 9th graders drop out before completing high school.

Plans of Latino High School Graduates. MA, 1995-2003



Latino students' plan post high school most frequently involve a 2 yr public institution of higher education or work. But, while the former has increased the latter has decreased significantly.

Four year public institutions have decreased their draw while the privates have gained.

Plans to join the military have also increased since 1995.

Sources

- Slide # 3: finance1.doe.mass.edu/statistics/enrollment_state.html and profiles.doe.mass.edu/enrollmentbyracegender.aspx both drawn on 9/03/2006
- Slide # 4: profiles.doe.mass.edu/enrollmentbyracegender.aspx drawn on 11/13/1999 and 9/03/2006
- Slide # 5: profiles.doe.mass.edu/enrollmentbyracegender.aspx drawn on 11/13/1999 and 9/03/2006
- Slide # 7: www.doe.mass.edu/mcas/results.html drawn on 9/17/2006
- Slide # 8: www.doe.mass.edu/mcas/results.html drawn on 9/17/2006
- Slide # 9: www.doe.mass.edu/mcas/results.html drawn on 9/17/2006
- Slide # 10: www.doe.mass.edu/mcas/results.html drawn on 9/17/2006
- Slide # 11: Uriarte, M. and Lisa Chavez, Latino Students and the Massachusetts Public Schools. (Boston: Gaston Institute, UMass Boston, 2000) and www.doe.mass.edu/infoservices/reports/dropout/0304/report.doc drawn on 9/03 and 9/17/2006
- Slide # 12: www.doe.mass.edu/infoservices/reports/dropout/ drawn on 9/17/2006
- Slide # 13: <http://www.doe.mass.edu/infoservices/reports/hsg/> drawn on 9/17/2006



The Mauricio Gastón Institute
for Latino Community Development
and Public Policy