

University of Massachusetts Boston

ScholarWorks at UMass Boston

Office of Community Partnerships Posters

Office of Community Partnerships

4-2-2014

Promoting Awareness, Dialogue, and Culturally Responsive Services

Cedric Woods

University of Massachusetts Boston, cedric.woods@umb.edu

Follow this and additional works at: https://scholarworks.umb.edu/ocp_posters



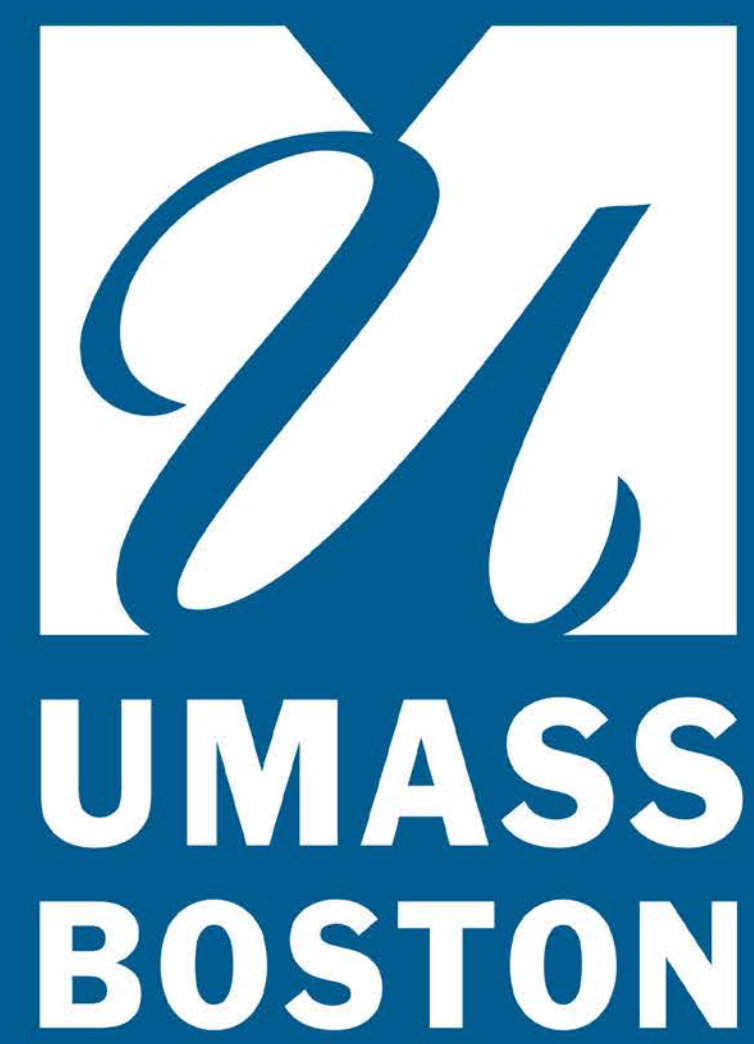
Part of the [Civic and Community Engagement Commons](#), and the [Indigenous Studies Commons](#)

Recommended Citation

Woods, Cedric, "Promoting Awareness, Dialogue, and Culturally Responsive Services" (2014). *Office of Community Partnerships Posters*. 281.

https://scholarworks.umb.edu/ocp_posters/281

This Presentation is brought to you for free and open access by the Office of Community Partnerships at ScholarWorks at UMass Boston. It has been accepted for inclusion in Office of Community Partnerships Posters by an authorized administrator of ScholarWorks at UMass Boston. For more information, please contact scholarworks@umb.edu.



Promoting Awareness, Dialogue, and Culturally Responsive Services

Cedric Woods, Director
Institute for New England Native American Studies

Mission

The mission of the Institute for New England Native American Studies (INENAS) is to develop **collaborative relationships, projects, and programs** between Native American tribes of the New England region and all of the UMass campuses **so that the tribes may participate in and benefit from university research, innovation, scholarship, and education.** As the interests, needs, and demographics of Native New England shift, these changing priorities will be reflected in its programming, grant submissions, and outreach efforts.

Approaches and Methods

- ✓ Assess changing priorities of tribal communities on an ongoing basis through surveys and direct consultations.
- ✓ Create culturally responsive programs and initiatives to address these priorities.
- ✓ Leverage collaborations with universities, community organizations, governmental agencies and tribes to increase collective impact.
- ✓ Provide outreach and technical assistance to all tribal communities in New England with goal of increasing financial capacity and services that directly impact Native communities.

Results/Impacts

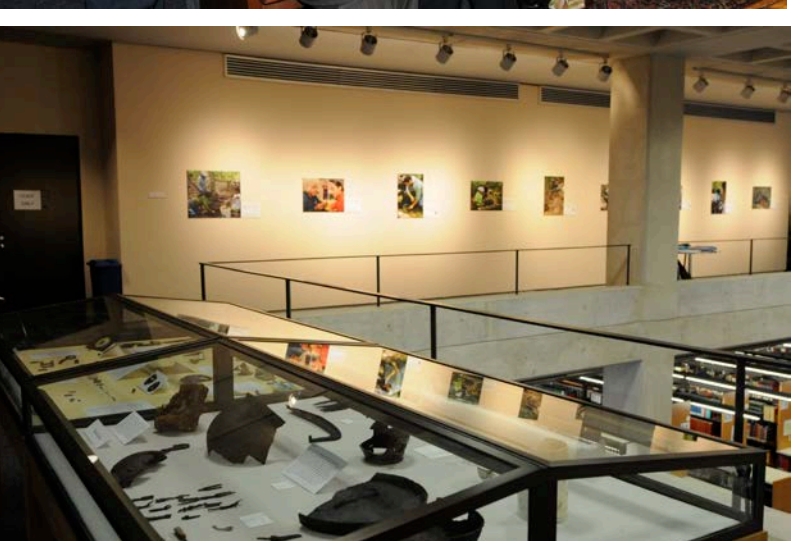
- Co-sponsored and supported **3 events** in 2013.
- **Convened 2 tribal communities** together for the first time, igniting a dialogue and the sharing of experiences.
- **Disseminated the *Grandparents' Raising Grandchildren Resource Guide*** through network of community organizations, tribal communities, governmental agencies, and in digital form.
- **Supported 18 hours of training** through 9 workshops to build capacity and cultural competence of those supporting Native grandparents with raising grandchildren.
- Trainings **reached 60 people** including grandparents and service providers.
- **Completed outreach visits** to all state and federally recognized tribes in New England States, including first time visits with nine tribes, Native organizations and university partners in Maine and Vermont.
 - Maine:* Passamaquoddy Indian Tribe (Indian Township); Micmac; Maliseet; Maine Bureau of Indian Education; Wabanaki Center; University of Maine-Orono.
 - Vermont:* Nulhegan Abenaki Tribe; Koasek of the Koas Abenaki Nation; Abenaki Nation at Missiquoi; Elnu Abenaki Tribe.

Events

INENAS sponsors and supports events to **expand knowledge and awareness of indigenous peoples** to the campus community and beyond.

2013 Events:

- *Re-inscribing Indigeneity: Creating Access to Native Narratives Through Scholarly Editing* – Explored improving accessibility to primary source materials on Native people's history and culture.
- *Beyond the Asterisk: Understanding Native Students in Higher Education* – A panel discussion about the lack of attention on and support for Native student experiences in college settings.
- *Conversations Between Communities* – Featured photography and artifact Exhibit with public dialogue between Eastern Pequot Tribal Nation (EPTN), Nipmuc Nation, and two collaborating Anthropology professors.



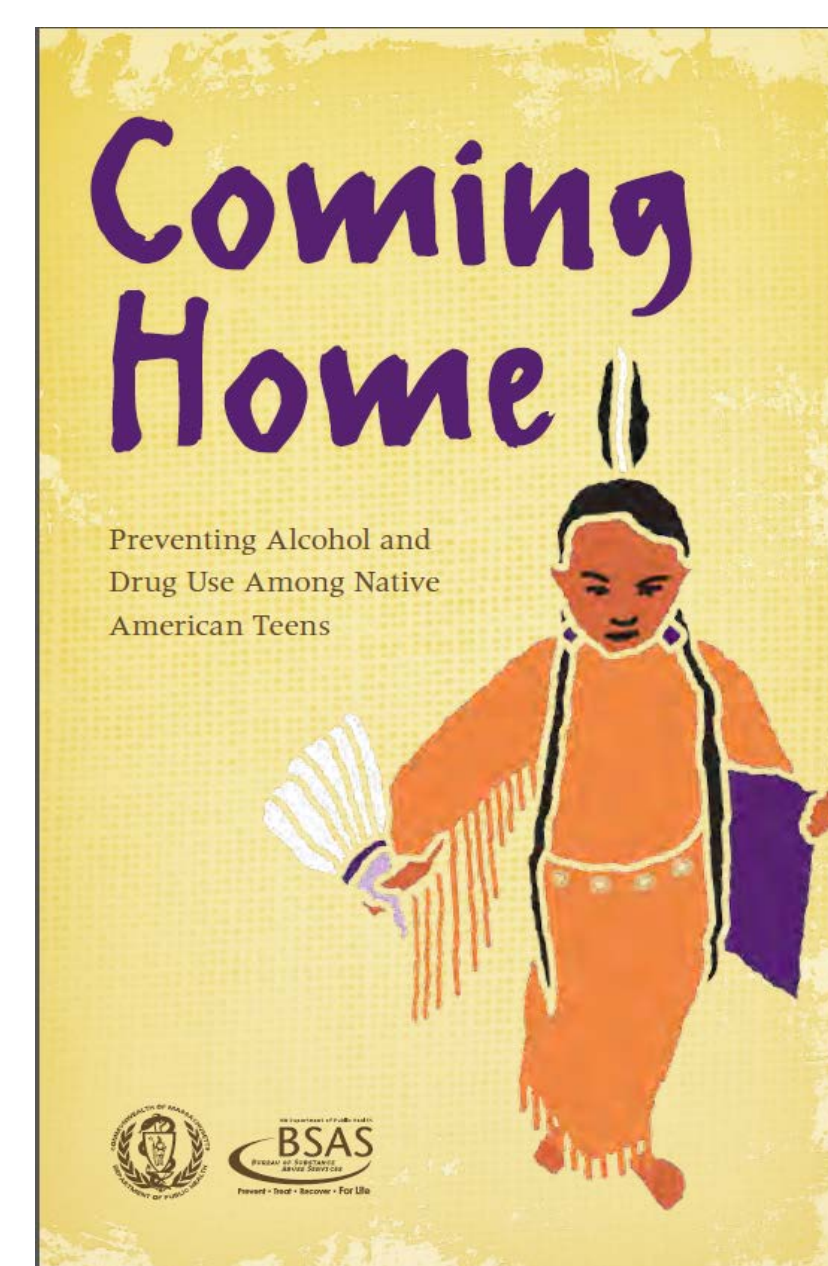
[Photos: (top) Tribal community members, INENAS Director, Professors; (bottom) Artifacts from Eastern Pequot Field School, in background.]

Upcoming

- *A Hidden History: How Massachusetts Law and Policy Facilitated the Loss of Tribal Lands* – featuring tribal leaders describing the loss of tribal lands in Massachusetts and its impact still felt today, April 15
- *Violence Against Women Convening* – Spring 2014

Addressing Substance Abuse

“Home can be a place, a culture, a feeling. “Coming home” means returning to what we value most in our heritage. Combining traditional Native values with present-day preventative measures can help protect our community, our health, and can be particularly powerful in helping to protect our youth from alcohol and other drug use.”



INENAS collaborated with the Bureau of Substance Abuse Services (BSAS) to develop *Coming Home: Preventing Alcohol and Drug Use Among Native American Teens*, a resource guide to assist Native American caregivers in supporting teenage children. Themes explore cultural teachings, peer pressure, and building strength by honoring Native roots. Training was provided to BSAS staff to build cultural competency and understanding of Native peoples. INENAS also assisted Health Resources in Action with supporting Native nonprofits to apply for substance abuse funds.

Resources and Additional Info

North American Indian Center of Boston (NAICOB)
617-232-0343 or www.naicob.org
Sylvia Mignon, William Holmes, College of Public and Community Service
(Collaborators on *Grandparents' Raising Grandchildren Program*)

Bureau of Substance Abuse Services (BSAS), Massachusetts Department of Public Health;
Robert Peters, Mashpee Wampanoag, **Kristen Wyman**, Nipmuc.
(Collaborators on *Coming Home Resource Guide*);

Harvard University, Suffolk University, and Yale University
Collaborating sponsors of events

INENAS: Website: www.umb.edu/inenas
Cedric Woods, Director: Cedric.Woods@umb.edu