

University of Massachusetts Boston

ScholarWorks at UMass Boston

Office of Community Partnerships Posters

Office of Community Partnerships

4-8-2015

Center for Social Policy: Systems Change through Place-Based and Collective Impact Initiatives

Arthur MacEwan

University of Massachusetts Boston, arthur.macewan@umb.edu

Brandynn Holgate

University of Massachusetts Boston, brandynn.holgate@umb.edu

Donna Haig Friedman

University of Massachusetts Boston, donna.friedman@umb.edu

Marija Bingulac

University of Massachusetts Boston, Marija.Bingulac001@umb.edu

Follow this and additional works at: https://scholarworks.umb.edu/ocp_posters



Part of the [Civic and Community Engagement Commons](#), and the [Social Policy Commons](#)

Recommended Citation

MacEwan, Arthur; Holgate, Brandynn; Friedman, Donna Haig; and Bingulac, Marija, "Center for Social Policy: Systems Change through Place-Based and Collective Impact Initiatives" (2015). *Office of Community Partnerships Posters*. 246.

https://scholarworks.umb.edu/ocp_posters/246

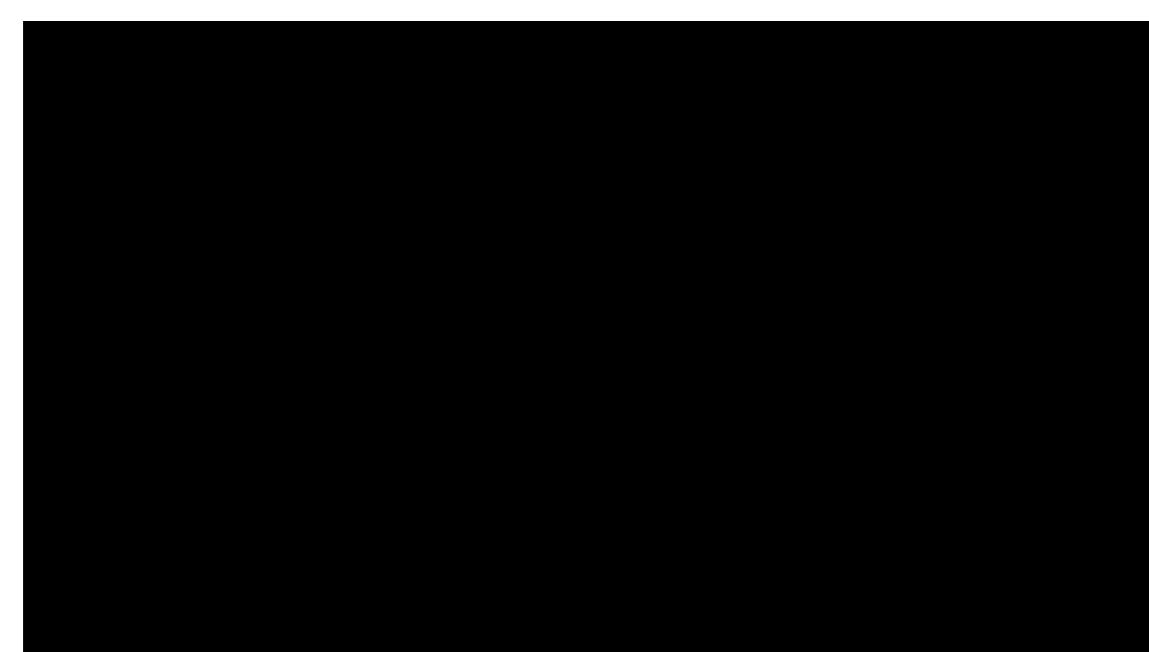
This Presentation is brought to you for free and open access by the Office of Community Partnerships at ScholarWorks at UMass Boston. It has been accepted for inclusion in Office of Community Partnerships Posters by an authorized administrator of ScholarWorks at UMass Boston. For more information, please contact scholarworks@umb.edu.



Center for Social Policy: Systems Change through Place-Based and Collective Impact Initiatives

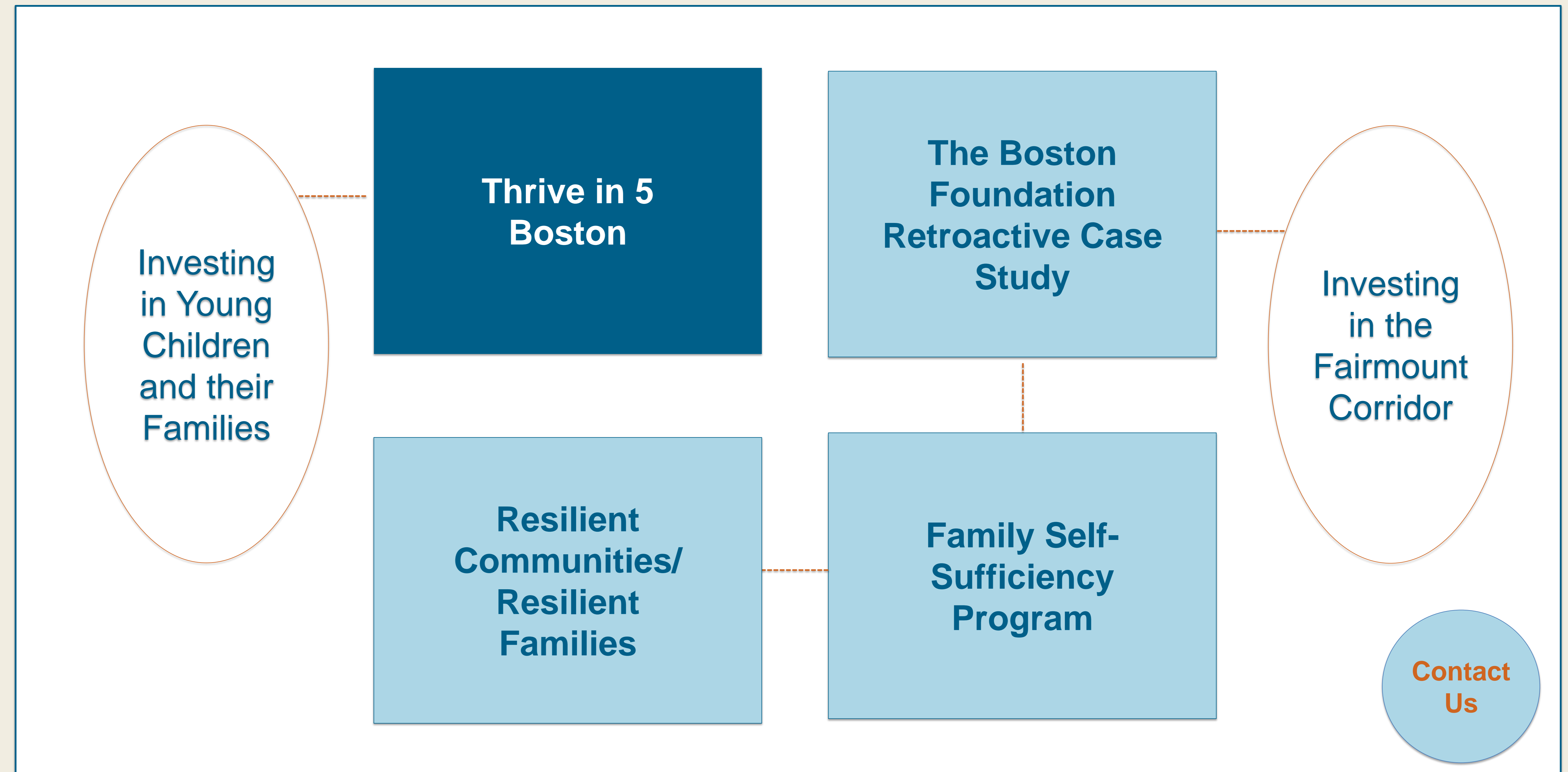
The Transformative Power of Inclusion

At the Center for Social Policy, the voices of those living in economic hardship and social exclusion not only inform our research and evaluation projects to help reshape poverty policy, they also inform us about the power of inclusive practices.

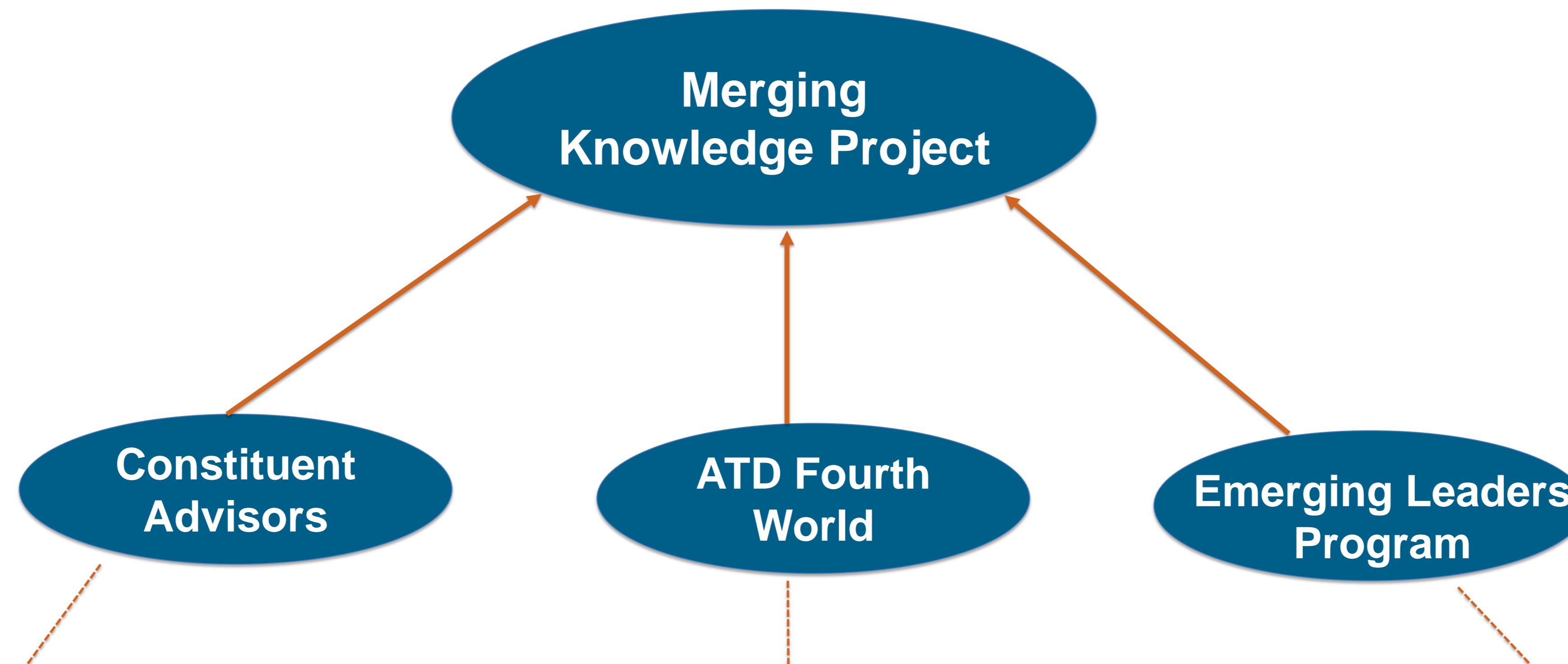


Merging Knowledge Project

We serve as a **thought partner** with philanthropists and community partners through learning, evaluation, and strategic development.



Merging Knowledge Project



Constituent Advisors:
Draws on insights of those most directly impacted by economic hardship and social exclusion for policy and practice ideas and based within CSP.

ATD Fourth World:
A network of people in poverty and those from other backgrounds who work in partnership towards overcoming the exclusion and injustice of persistent poverty.

Emerging Leaders Program:
Brings together future leaders from across sectors and the Boston-area to provide collaborative leadership training led by UMass Boston's College of Management.



Watch a Participant Speak at UN!

"People in poverty cannot be viewed through a lens that only sees what is lacking, but rather through a lens that also sees the knowledge gained through their life experiences."

- Derek Morris, a participant in Emerging Leaders and our Boston Merging Knowledge project, speaking at the UN on October 17 2014.



Julia Tripp participated at the United Nations panel "Participatory Monitoring and Accountability: Critical Components for the Post-2015 Development Agenda". She talked about the importance of participatory action research and creating a more inclusive world.

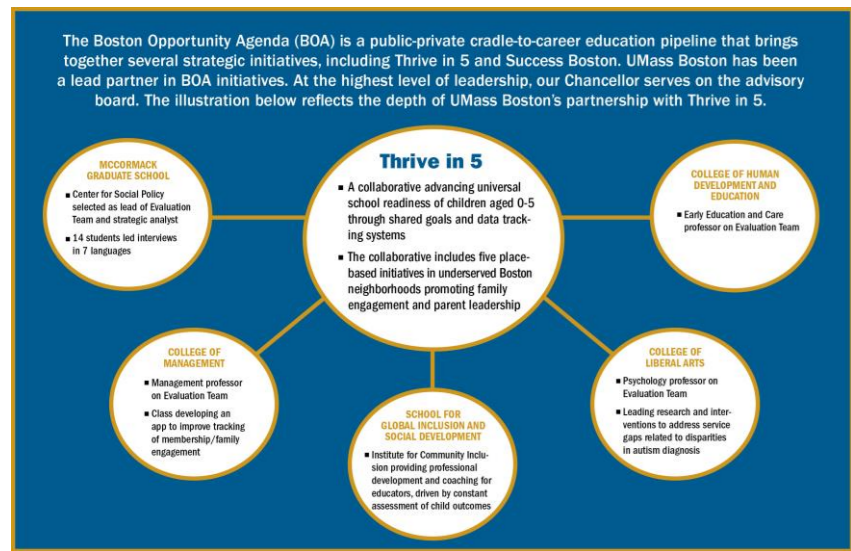




Center for Social Policy: External Evaluator for Thrive In 5 Boston

UMass Boston's Role

UMass Boston team is a *thought partner*, providing real time feedback for immediate use. The evaluation team taps multiple university resources by including students and faculty from four departments and the **CSP**.



Goals

- By 2014, interim goal = 75% of Boston's children entering kindergarten will be ready.
- By 2018, all of Boston's children will be ready for school at kindergarten entry. Today, only 54% of Boston's children are.

This means shifting the paths of about 5,000 to 7,000 young children.

Thrive in 5's Approach

Implement a set of **school readiness measures**, from birth through kindergarten, that account for the 5 nationally-recognized domains of school readiness:

- language development;
 - cognition and general knowledge;
 - approaches to learning;
 - social and emotional development;
 - physical and motor development.
- ✓ "School ready" is currently measured by the DIBELS, a literacy assessment.



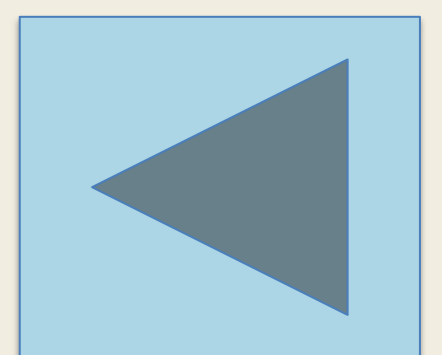
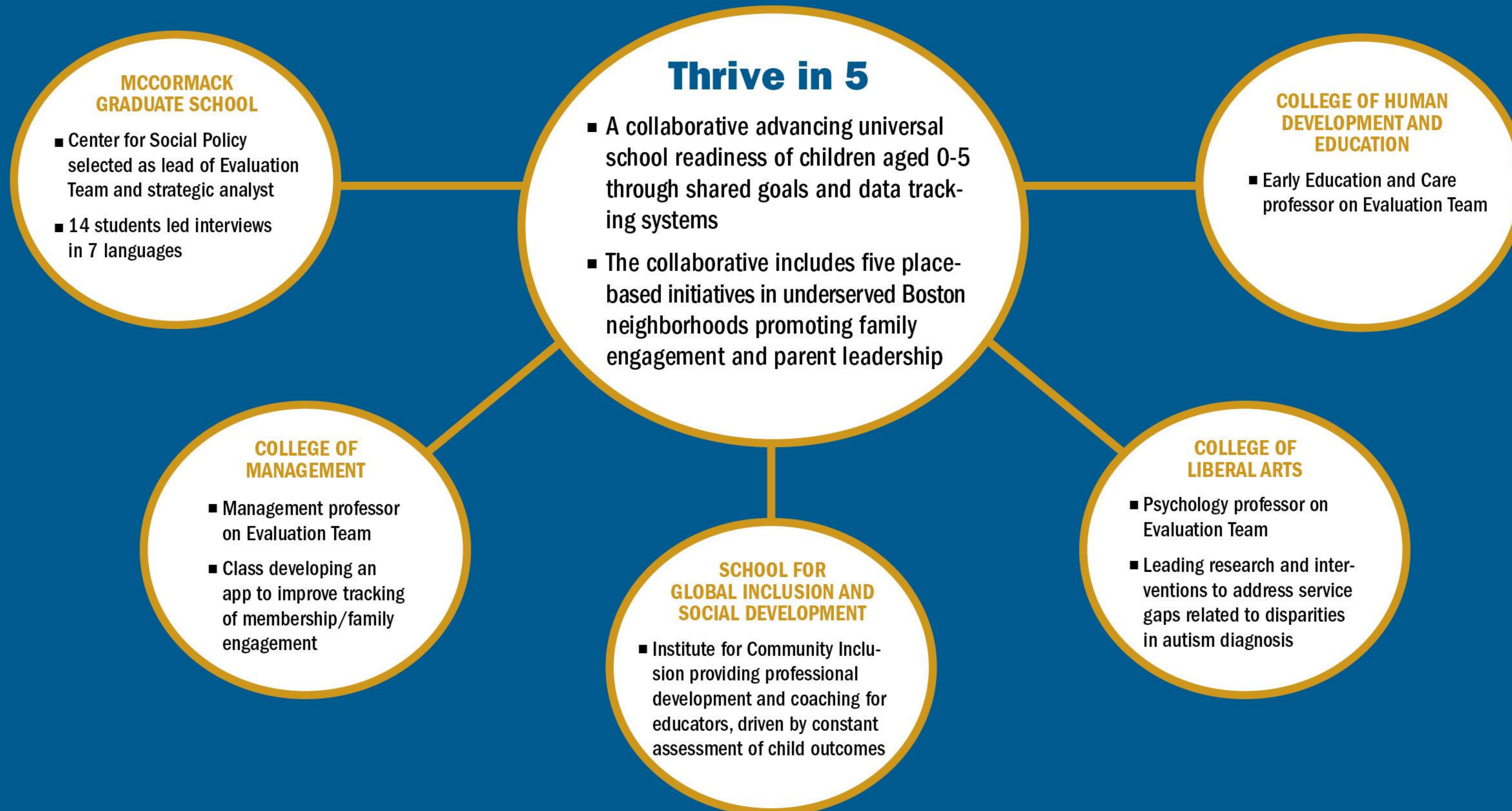
On-the-Ground Pilot Communities Across Boston

- ✓ 14 priority strategies
- ✓ 2 critical aspects: early language/literacy skills and social, emotional and behavioral development
- ✓ 5 neighborhoods
- **Family Nurturing Center of MA**
- **Boston Community Partnerships for Children**
- **United South End Settlements**
- **Dudley Street Neighborhood Initiative**
- **Dorchester House Multi-Service Center**



Center for Social Policy: External Evaluator for Thrive In 5 Boston

The Boston Opportunity Agenda (BOA) is a public-private cradle-to-career education pipeline that brings together several strategic initiatives, including Thrive in 5 and Success Boston. UMass Boston has been a lead partner in BOA initiatives. At the highest level of leadership, our Chancellor serves on the advisory board. The illustration below reflects the depth of UMass Boston's partnership with Thrive in 5.



Resilient Communities/ Resilient Families (RC/RF)

Through RC/RF, CSP collaborates with Mattapan United and Millennium 10 in the Codman Square/Four Corners neighborhood of Dorchester to identify community priorities for neighborhood change. From 2013-2015, the Center team is evaluating these neighborhood change efforts, as well as other initiatives aimed at increasing economic well-being for neighborhood residents.

Outcomes

- Developed conceptual, evidence-based alignment framework for TBF
- Assisted 2 neighborhood organizing groups to generate and analyze information from community residents to inform action priorities
- Informed evaluation priorities for 2013-15
- 2 students engaged 8-16 hours/week

CSP serves as a strategic learning and evaluation partner to The Boston Foundation with a focus on its collective investments in neighborhoods along the Fairmount Corridor.

Our Approaches

- Participatory evaluation action research
- Theory-driven, utilization-focused approach
- Using multiple methods/data sources (Interviews, case studies, field observations, media analysis, document review)

Program-level Evaluation Strategy:

Understand RC/RF implementation:

- ✓ procedural accomplishments/challenges
- ✓ community building/family outcomes
- ✓ role of neighborhood context

Corridor-Level Learning:

Inform next stages of TBF's investment:

- ✓ Track TBF's contribution to transformative strategies that change life trajectories for low income children/families and neighborhoods.

Millennium Ten Initiative added 10 new photos.
May 5 at 11:18am · Edited

Another great time at Dorchester Academy's cooking class!! Last Thursday we made A fusion Haitian/French dish. Turned out a special kind of delicious! Thank you Gilbert Albert Community Center for lending us a Chef and participating! #20in2014 #Collaboration



Supported by CSP

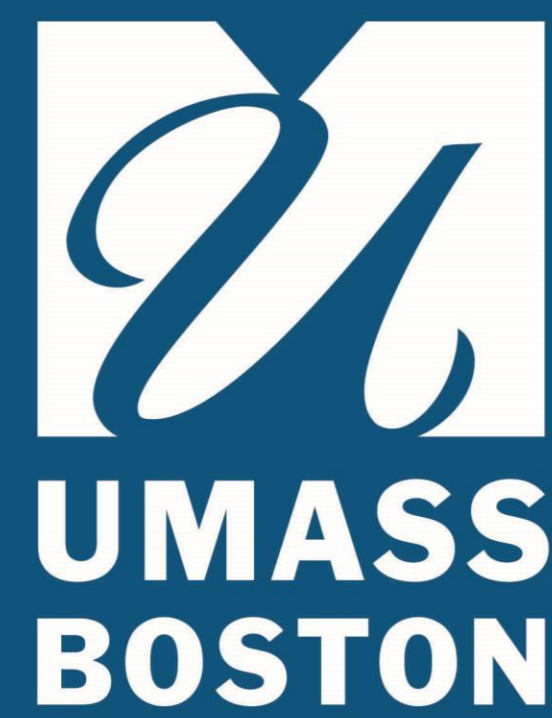
Led by 2 Organizations

Informed by Residents



Action Priorities

1. A Connected Community
2. A Thriving Community
3. A Healthy Community
4. A Supportive Community



Center for Social Policy: Promoting Sustainable Change through Place-based Initiatives within Fairmount Corridor

The Boston Foundation Retrospective Case Study

CSP conducted a retrospective case study of the Fairmount Strategy (2009-2015) focusing on one of Foundation's central tenets: alignment.

Using an **Alignment Framework**—Geographic, Brokerage, Coordination, Leverage—CSP is investigating how TBF has invested resources of time, money, and influence in the Fairmount neighborhoods and what these contributions to community change have yielded during the study period.

Goal

- To provide a record of TBF's investments and activities along the Fairmount Corridor, track TBF's contribution to transformative change through the lens of alignment, and inform its future strategic actions.

CSP serves as a strategic learning and evaluation partner to The Boston Foundation with a focus on its collective investments in neighborhoods along the Fairmount Corridor.

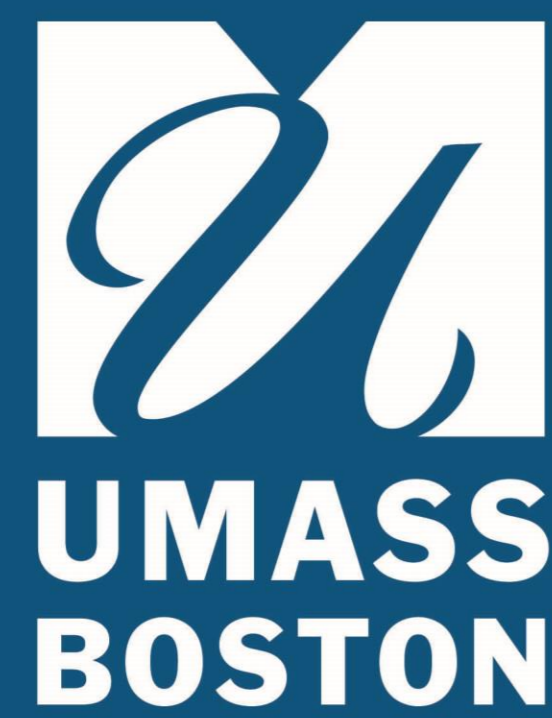
3 research and learning objectives identified by CSP for the case study:

1. A working statement of TBF's Fairmount Strategy that enables collective understanding, discussion, and decision-making for TBF's strategy and policy agenda going forward;
2. A succinct statement of TBF's role in the Corridor since 2009 in terms of both grant-making and change-making activities and their contribution to neighborhood change processes and intermediate outcomes, focusing specifically on the concept of alignment;
3. A deeper understanding of the political and economic context in the Corridor and how this context relates to opportunities and challenges for TBF

CSP has conducted:

- 30 interviews completed with TBF Internal senior leaders, Fairmount grantees and community leaders, and other Fairmount and City level stakeholders;
- Analysis of TBF Documents (internal & web-site) and grant materials;
- Secondary data analysis of contextual neighborhood factors.





Center for Social Policy: Promoting Sustainable Change through Place-based Initiatives within Fairmount Corridor

Family Self-Sufficiency Program

The Metropolitan Boston Housing Partnership's Family Self-Sufficiency (MBHP FSS) program is one of TBF's people-oriented Fairmount Corridor investments. As part of a U.S. Department of Housing and Urban Development (HUD) program, MBHP FSS supports families receiving housing assistance with additional case management and access to opportunities and services aimed at helping participants reach goals related to economic advancement.

Research Questions:

- How have program outcomes changed during the study period and how do they compare to other FSS programs?
- How do different family circumstances (e.g., service needs, income level, employment status, educational attainment, and care responsibilities) relate to outcomes?
- How does FSS partnership engagement during the study period enhance the variety and quality of supports and resources for program participants?

CSP serves as a strategic learning and evaluation partner to The Boston Foundation with a focus on its collective investments in neighborhoods along the Fairmount Corridor.

CSP Approach

- Facilitate real-time learnings that promote data informed reflection, planning and decision making
- Generate policy relevant information on the FSS expansion and implementation for broader audiences
- Use quantitative and qualitative data collection and analysis strategies

CSP Methods

- Quantitative analysis on characteristics of successful participants
- Interviews with participants to learn more about their experiences
- Surveying of MBHP's partners to understand how depth of partnerships contribute to service quality
- Analysis of who applies versus who does not, and what happens to graduates

Outcomes

Over time, as participants' earned income increases, they accrue savings in an escrow account, built up in lieu of increased rents. Evaluation findings to date include:

↑ to **375 Participants**
(baseline 216)

70% Reside
in Fairmount Corridor

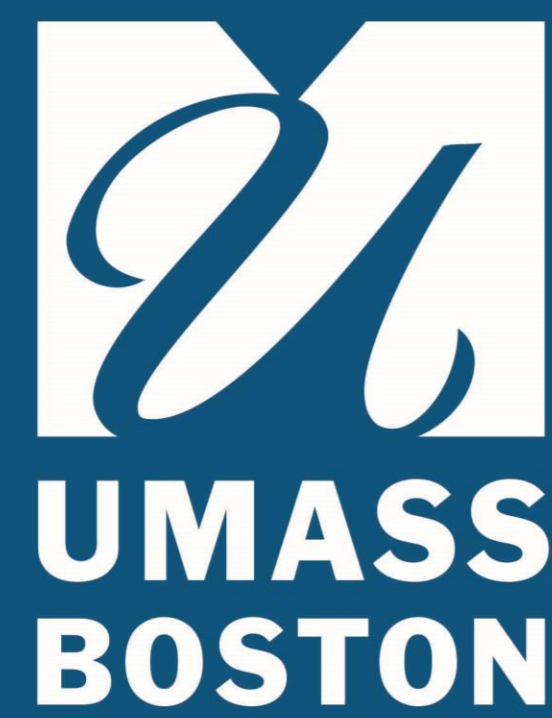
FSS participants residing in the Fairmount Corridor have seen:

Average Escrow for Graduates
between 2009-2014: **\$12,009**

Combined Escrow Balance
Increased to: **\$427,000**

Combined Earned Income
Increased to: **over \$2 Million**

Home



Contact Us!

Thrive in 5

- **Donna Haig Friedman & Mary Coonan, CSP**
- **Alice Carter**, Department of Psychology
- **Anne Douglass**, Early Education and Care in Inclusive Settings
- **Oscar Gutierrez**, former Associate Dean, College of Management

The Boston Foundation Retroactive Case Study

- **Mary Coonan, CSP**

Resilient Communities/Resilient Families

- **Marija Bingulac, CSP**

Family Self-Sufficiency Program

- **Brandynn Holgate, CSP**

Stay in Touch:
Email: csp@umb.edu
Phone: 617-287-5550

Home